

SEAFOAM

by Jennifer Shorto Textiles

REF. CODE — F26736107 C01

COLOR — Firelight

COMPOSITION — 45% Cotton 41% Viscose 14% Flax

WIDTH — 136 cm / 53.5"

WEIGHT — 455 g / m²

VERTICAL REPEAT — 36.6 cm / 14.4"

HORIZONTAL REPEAT — 9.7 cm / 3.8"

MARTINDALE — Abrasion Class A 35000 rub counts

COLOR FASTNESS — To water: Class A, to light: Class B

CARE — Dry cleaning

SPECIFY FOR — Upholstery, Drapery, Soft Furnishings.

SOLD BY: Meter / Yard



SEAFOAM

by Jennifer Shorto Textiles

REF. CODE — F26736101 C01

COLOR — Teal

COMPOSITION — 45% Cotton 41% Viscose 14% Flax

WIDTH — 136 cm / 53.5"

WEIGHT — 455 g / m²

VERTICAL REPEAT — 36.6 cm / 14.4"

HORIZONTAL REPEAT — 9.7 cm / 3.8"

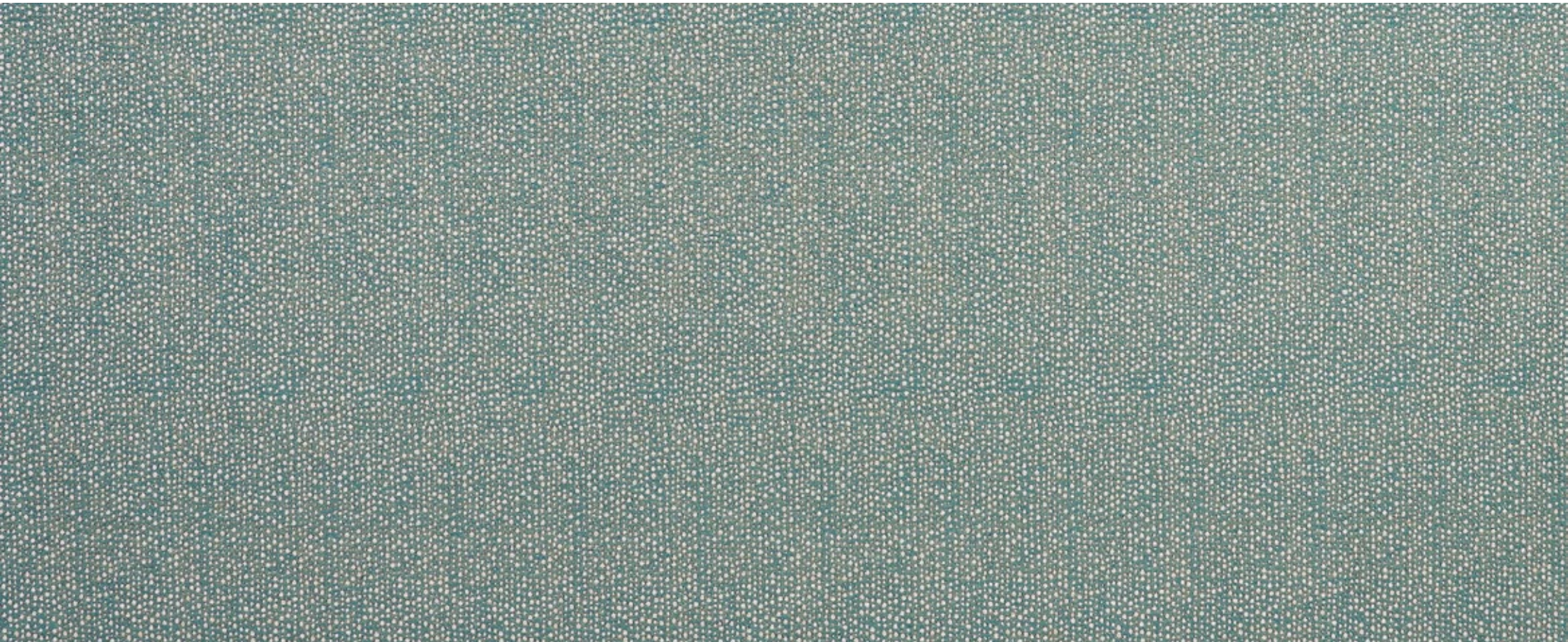
MARTINDALE — Abrasion Class A 35000 rub counts

COLOR FASTNESS — To water: Class A, to light: Class B

CARE — Dry cleaning

SPECIFY FOR — Upholstery, Drapery, Soft Furnishings.

SOLD BY: Meter / Yard



SEAFOAM

by Jennifer Shorto Textiles

REF. CODE — F26736104 C01

COLOR — Neutral

COMPOSITION — 45% Cotton 41% Viscose 14% Flax

WIDTH — 136 cm / 53.5"

WEIGHT — 455 g / m²

VERTICAL REPEAT — 36.6 cm / 14.4"

HORIZONTAL REPEAT — 9.7 cm / 3.8"

MARTINDALE — Abrasion Class A 35000 rub counts

COLOR FASTNESS — To water: Class A, to light: Class B

CARE — Dry cleaning

SPECIFY FOR — Upholstery, Drapery, Soft Furnishings.

SOLD BY: Meter / Yard



SEAFOAM

by Jennifer Shorto Textiles

REF. CODE — F26736102 C01

COLOR — Pink

COMPOSITION — 45% Cotton 41% Viscose 14% Flax

WIDTH — 136 cm / 53.5"

WEIGHT — 455 g / m²

VERTICAL REPEAT — 36.6 cm / 14.4"

HORIZONTAL REPEAT — 9.7 cm / 3.8"

MARTINDALE — Abrasion Class A 35000 rub counts

COLOR FASTNESS — To water: Class A, to light: Class B

CARE — Dry cleaning

SPECIFY FOR — Upholstery, Drapery, Soft Furnishings.

SOLD BY: Meter / Yard



SEAFOAM

by Jennifer Shorto Textiles

REF. CODE — F26736103 C01

COLOR — Red

COMPOSITION — 45% Cotton 41% Viscose 14% Flax

WIDTH — 136 cm / 53.5"

WEIGHT — 455 g / m²

VERTICAL REPEAT — 36.6 cm / 14.4"

HORIZONTAL REPEAT — 9.7 cm / 3.8"

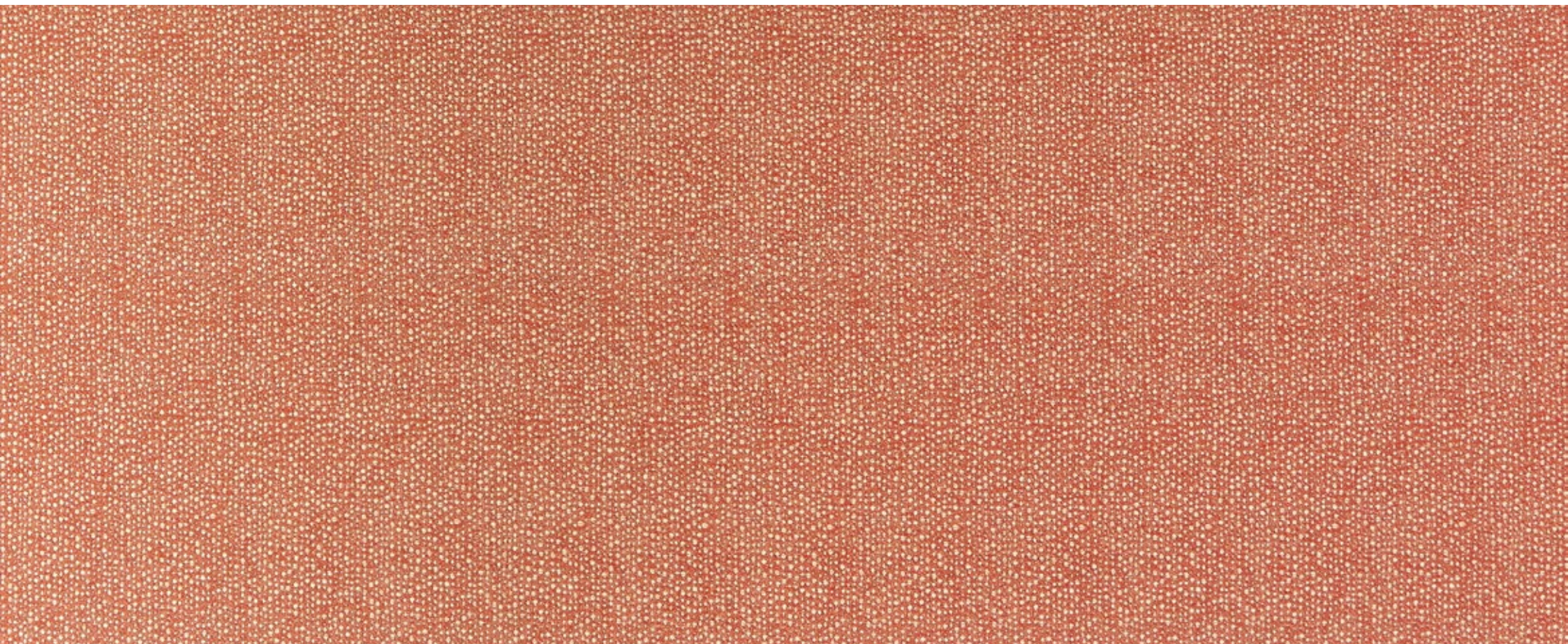
MARTINDALE — Abrasion Class A 35000 rub counts

COLOR FASTNESS — To water: Class A, to light: Class B

CARE — Dry cleaning

SPECIFY FOR — Upholstery, Drapery, Soft Furnishings.

SOLD BY: Meter / Yard



SEAFOAM

by Jennifer Shorto Textiles

REF. CODE — F26736106 C01

COLOR — Ocean

COMPOSITION — 45% Cotton 41% Viscose 14% Flax

WIDTH — 136 cm / 53.5"

WEIGHT — 455 g / m²

VERTICAL REPEAT — 36.6 cm / 14.4"

HORIZONTAL REPEAT — 9.7 cm / 3.8"

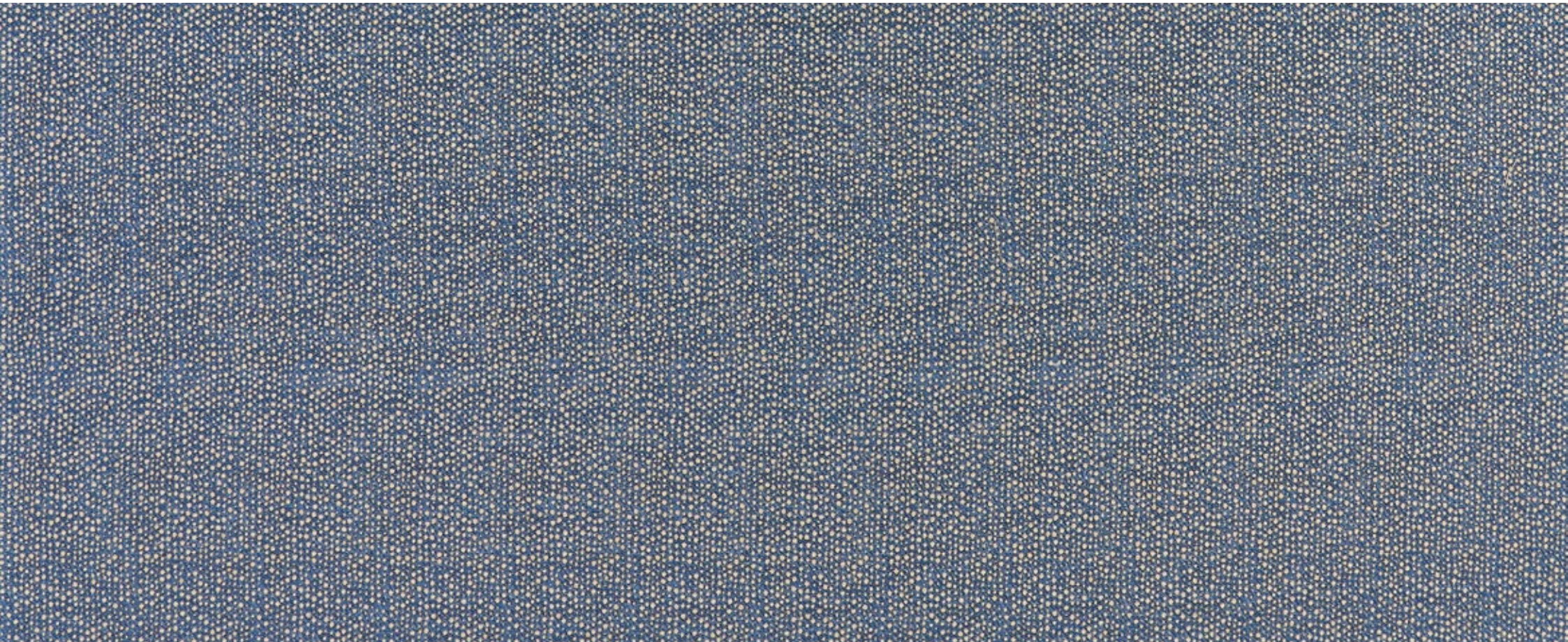
MARTINDALE — Abrasion Class A 35000 rub counts

COLOR FASTNESS — To water: Class A, to light: Class B

CARE — Dry cleaning

SPECIFY FOR — Upholstery, Drapery, Soft Furnishings.

SOLD BY: Meter / Yard



SEAFOAM

by Jennifer Shorto Textiles

REF. CODE — F26736105 C01

COLOR — Charcoal

COMPOSITION — 45% Cotton 41% Viscose 14% Flax

WIDTH — 136 cm / 53.5"

WEIGHT — 455 g / m²

VERTICAL REPEAT — 36.6 cm / 14.4"

HORIZONTAL REPEAT — 9.7 cm / 3.8"

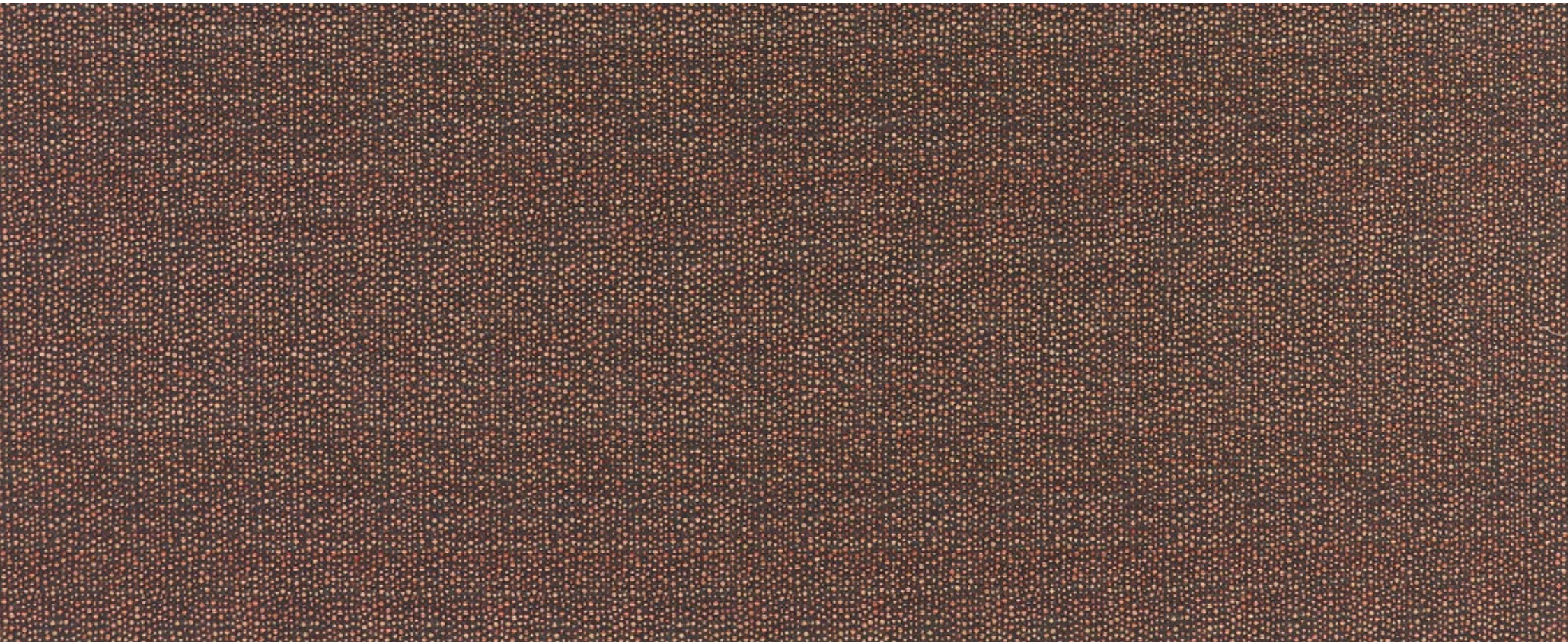
MARTINDALE — Abrasion Class A 35000 rub counts

COLOR FASTNESS — To water: Class A, to light: Class B

CARE — Dry cleaning

SPECIFY FOR — Upholstery, Drapery, Soft Furnishings.

SOLD BY: Meter / Yard



SEAFOAM

by Jennifer Shorto Textiles

REF. CODE — F26736105 C01

COLOR — Mint

COMPOSITION — 45% Cotton 41% Viscose 14% Flax

WIDTH — 136 cm / 53.5"

WEIGHT — 455 g / m²

VERTICAL REPEAT — 36.6 cm / 14.4"

HORIZONTAL REPEAT — 9.7 cm / 3.8"

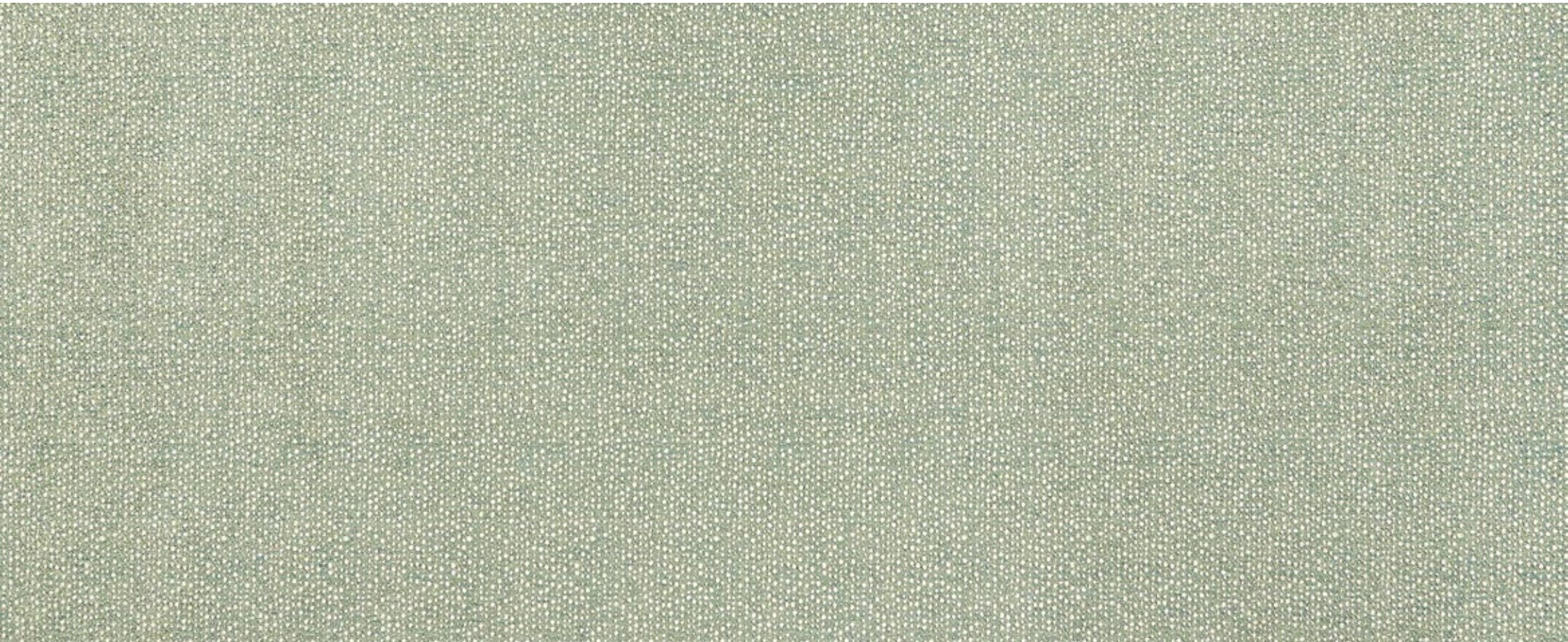
MARTINDALE — Abrasion Class A 35000 rub counts

COLOR FASTNESS — To water: Class A, to light: Class B

CARE — Dry cleaning

SPECIFY FOR — Upholstery, Drapery, Soft Furnishings.

SOLD BY: Meter / Yard



SEAFOAM

by Jennifer Shorto Textiles

